

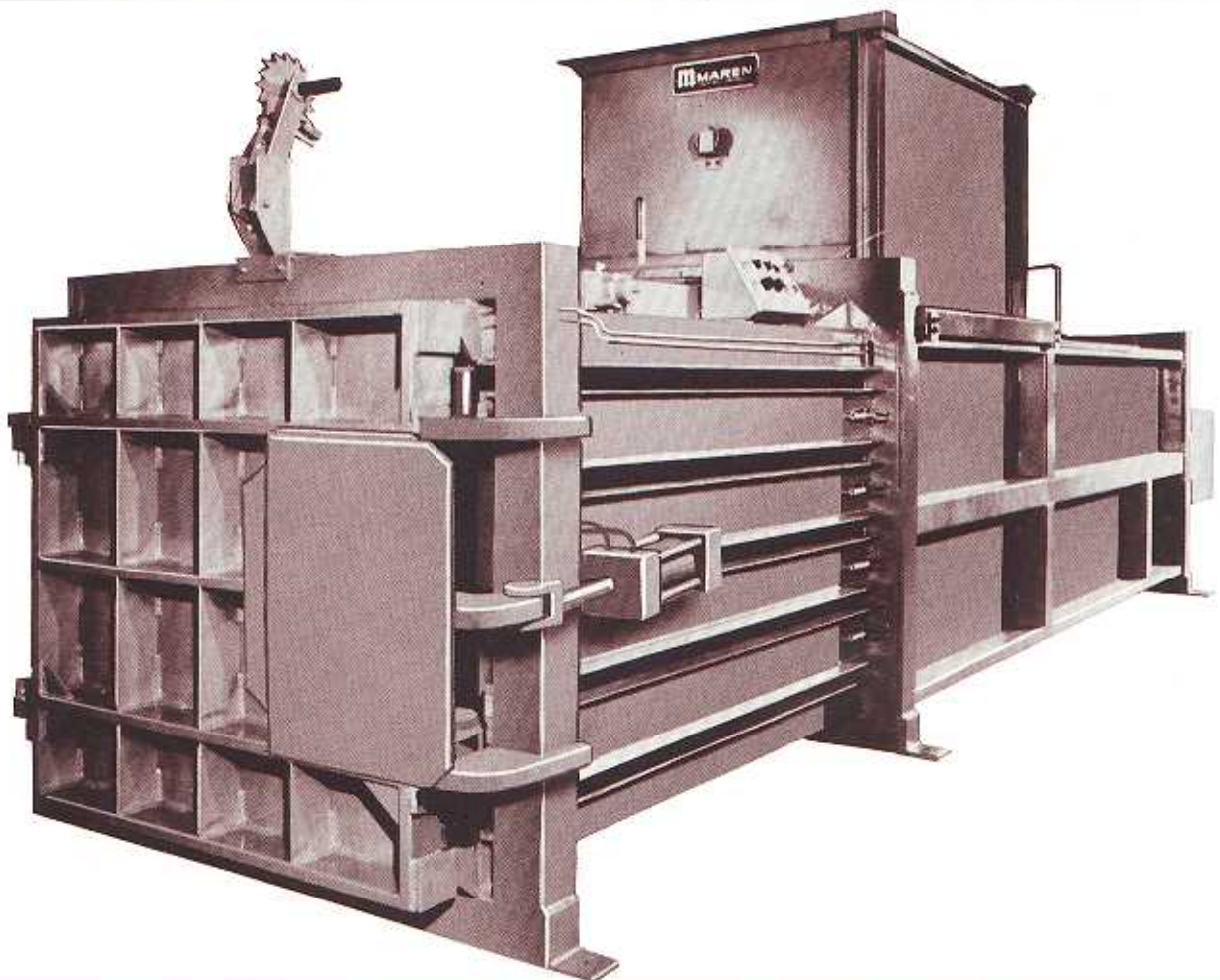


Maren giant 60"/72" horizontal balers



***Mill size bales ... low cost balers ...
cut waste handling costs!***

Maren's big horizontal balers solve scrap handling problems efficiently and economically, by quickly converting large unsightly volumes into easily stored mill size bales. These simple to operate balers also save manpower, eliminate pilferage problems, reduce fire hazards, and promote increased profits through recycling. There is a Maren baler that precisely meets your needs.





Maren high performance horizontal balers solve waste problems.

Maren high performance horizontal balers solve waste problems. Maren options give you the opportunity to select the particular baler that provides the greatest efficiency for your needs. This kind of versatility in a time proven product spells real cost economy for you. Compare Maren features and benefits. Unmatched performance means long, rugged, dependable use to solve your air pollution, waste handling and disposal problems.

- Fast ram cycles available
- 21 tons of thrust, or more, for dense uniform bales
- Large, wide feeder hoppers for easy loading of bulky materials
- Safe, easy operation
- Safety - Hydraulic relief valves
- Safety Door checks
- "Full bale" alert buzzers
- Automatic bale ejection
- No pits or special foundations needed
- Open end design available
- Delivered ready for operation

Automatic Balers Models 60 / 72

The lowest priced automatic balers on the market for making compact to "mill sized" bales. These units are very popular for use in a pneumatic conveying system for baling corrugated and paper, and for many special applications. Combining low investment cost with automatic operation, Maren automatic balers quickly pay for themselves in lower labor costs, improved housekeeping and space savings.

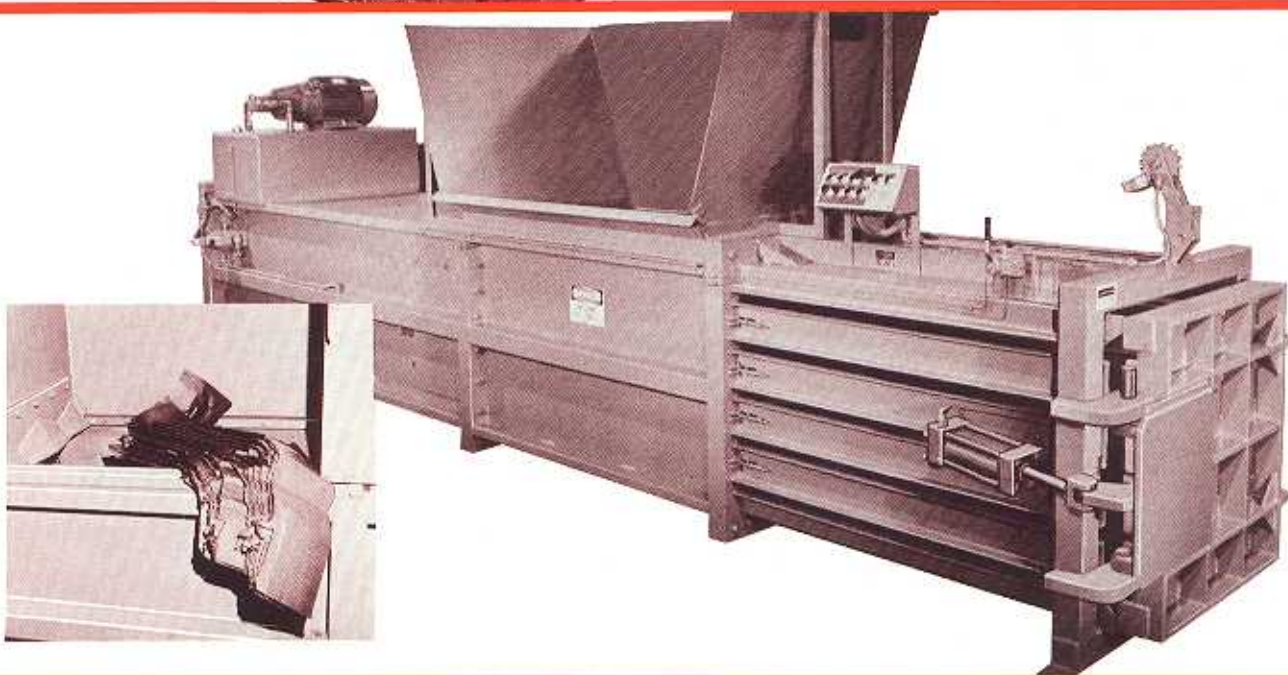
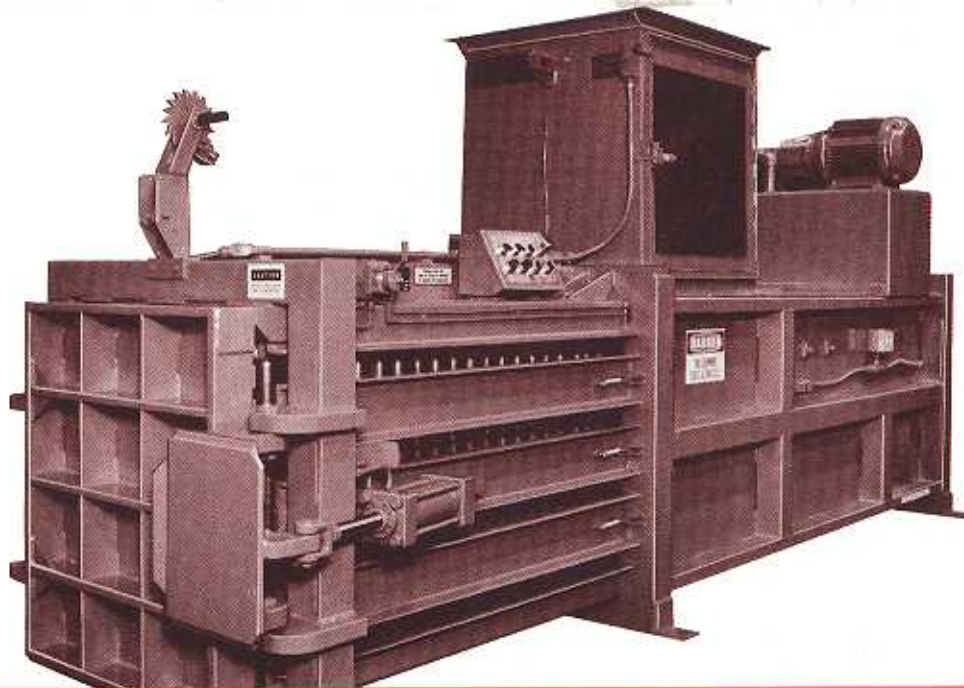
Super Size Models 60S / 72S

Big "supersize" feeder hoppers to take even the largest boxes. Model 60-S and 72-S eliminate the need for shredders and pinch conveyors. The giant feeder hopper capacity can take big items without preprocessing. Hoppers available in a number of sizes, from 35 cubic feet to 65 cubic feet. Special shear features can also be supplied to keep hopper clear for next load. Big boxes are forced against stationary shear blade, chopping off top portion of box that is baled on next stroke. Reinforced bridge and ram promote long equipment life. Extra high thrust delivers maximum bale density.

Safe, automatic operation requires no attendant

Maren automatic balers operate unattended while a bale is being made. Waste materials are delivered into feeder hopper by pneumatic conveying, belt conveyor or gravity feed system. Baler starts operating as soon as enough material has accumulated in the hopper to cut off sonar beam control. The ram moves forward, packs the hopperful of material into the baling chamber and returns automatically to its back position. If sonar beam continues to be interrupted by accumulated material in hopper, the ram goes thru another stroke cycle. If hopper is empty, motor shuts off and baler is idle.

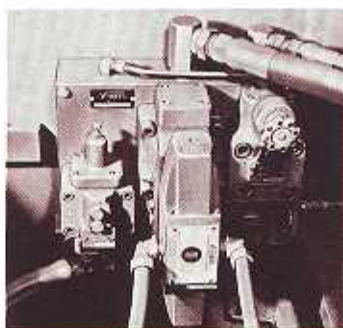
While bale is being made, no attendant is required. When a finished bale is formed, operator is signalled by a loud buzzer. He returns to baler, inserts wire ties and ties off finished bale.



Other attractive design features...

Safety Door Check

Maren door checks (the original in the industry) insure safe discharge door operation. Discharge door cannot pop open during baler operation. Hydraulic cylinder gradually relieves pressure against door, when bale is ready for ejection.



Master Control

Another extra Maren feature. As shown, all valving is centralized in one manifold. Thus valves can be quickly and easily removed and replaced - without even breaking a pipe coupling.

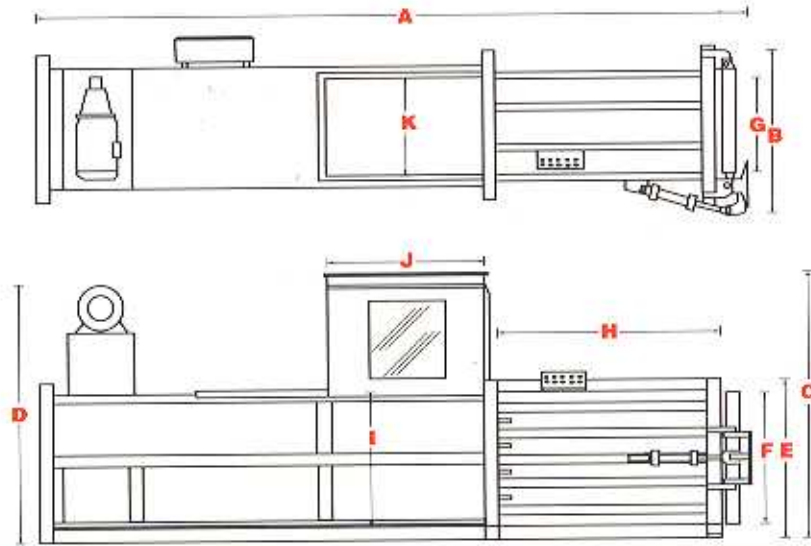
Optional manual and semi-automatic controls available.

Balers can be equipped with safe, easy manual controls. A feeder hopper door is provided in place of feeder hopper chute. The direction of the ram is controlled by hand lever. The operator fills the hopper with materials, closes and locks hopper door. The operating lever is held forward to compress material into the baling chamber. The lever is then held in the opposite direction to return ram to original position, with hopper clear for next load.

With semi-automatic controls, the operator momentarily contacts a push button which starts the baler motor. The ram automatically makes one complete stroke forward, automatically reverses and stops.

A full bale pressure switch and buzzer is standard on all manual, semi-automatic, and automatic balers, to alert the operator that the bale is complete and ready to be tied.

Compare specifications...
there's a Maren "big bale" baler to solve all your waste handling problems efficiently.



SPECIFICATIONS	MAREN 72	MAREN 72S	MAREN 72/48-312	MAREN 72/60-336
Overall Dimensions				
(A) Length	180"	218"	220"	244"
(B) Width	50"	50"	62"	65"
(C) Height - with Infeed Chute	76 3/4"	82 3/4"	82 3/4"	82 3/4"
(D) Height - at power pack end	74"	80"	83"	84 1/2"
(E) Height - to top of Baling Chamber	45"	51"	51"	51"
Product Bale - Baling Chamber				
(F) Height	36"	42"	42"	42"
(G) Width	30"	30"	42"	45"
* (H) Length	72"	72"	72"	72"
Feeder Hopper				
(I) Height - not including Infeed Chute	36"	42"	42"	42"
(J) Length	30"	48"	48"	60"
(K) Width	30"	30"	42"	45"
Capacity of Feeder Hopper	19 CF	35CF	49CF	65CF
Number of Bale Ties	4	5	5	5
Operating Pressure	1500 PSI	1500 PSI	2150 PSI	2300 PSI
Thrust	42,390 lbs.	42,390 lbs.	60,000 lbs.	64,260 lbs.
Pump	18 GPM	25 GPM		
Cylinder	6" dia. x 38"	6" dia. x 56"	6" dia. x 56"	6" dia. x 68"
Motor	15 HP	20 HP	30 HP	40 HP
Cycle Time	18 Sec.	20 Sec.	20 Sec.	30 Sec.
Total Press Weight	7,000 lbs.	8,800 lbs.	11,500 lbs.	13,000 lbs.

* A 60" bale is also available on any of the above described units.

MAREN ... FOR THE VERY LARGEST CHOICE IN BALERS AND BALING ACCESSORIES.

Select from the nations largest line. Achieve maximum productivity with the right piece of equipment for every need, from the nation's leading baler manufacturer. Vertical balers, horizontal balers, portable balers, open end balers. special material balers, automatic bale tiers, pinch conveyors, shredders.



MAREN ENGINEERING CORP.

P. O. Box 278 / South Holland, IL 60473 / Phone (312) 333-6250 / Fax No. (312) 333-7507